

*Creature From the Blue Lagoon*  
organized by Bob Nickas  
July 21- September 3, 2012

CHECKLIST

Porch:



Ben Schumacher  
*Untitled, 2012*  
tempered glass, microfiche, scratch resistant film, perforated vinyl, custom printed neck tie, and stainless steel hardware  
72 x 18 x 30 inches  
unique work



Ryan Foerster  
*Photo Book Printing Plate 3, 2012*  
aluminum printing plate  
35 x 23 inches  
unique work  
FR\_12\_042



Ryan Foerster  
*Photo Book Printing Plate 4, 2012*  
aluminum printing plate  
35 x 23 inches  
unique work  
FR\_12\_043

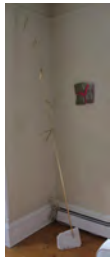


Lisa Beck  
*Window Pane, 2012*  
lucite balls, stainless steel cable and hardware  
38 x 26 x 3 inches  
unique work

Living Room:



Nathaniel Robinson  
*Weather, 2012*  
modified gypsum cement, glass fiber, wood, polyurethane foam, paint  
22 x 30 x 30 inches  
unique work



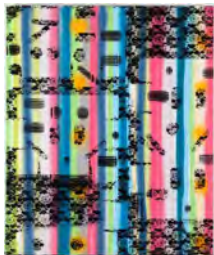
Elaine Cameron-Weir  
*Machine*, 2012  
marble, brass  
75 x 5 x 5 inches  
unique work



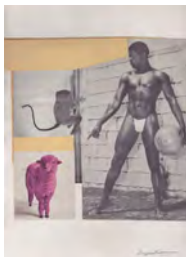
Mary Heilmann  
*San Andreas*, 2012  
glazed ceramic on painted wood  
8 3/4 x 9 inches  
unique work



John Miller  
*Middle of the Day (06-17-08)*, 2008/2012  
inkjet print  
8.5 x 11 inches



Tamara Gonzales  
*Buddy*, 2011  
spray paint on canvas  
30 x 36 inches  
unique work



E'wao Kagoshima  
*Untitled*, 1980  
collage on paper  
12 x 9 inches  
unique work



E'wao Kagoshima  
*Untitled*, 1980  
collage on paper  
12 x 9 inches  
unique work

Darren Bader  
*antipodes (study) 4573, 2012*



John Miller  
*Middle of the Day (06-17-2008), 2008/2012*  
inkjet print  
8.5 x 11 inches



Keith Sonnier  
*Mr. Smith (Flocked Relic Series), 2011*  
african mask, flocking  
19 1/2 x 7 x 6 inches  
unique work



Ray Johnson  
*Untitled (Toad/Water), 1958*  
collage  
7 3/4 X 7 1/8 ; 17 x 12 1/2 inches  
signed: Ray Johnson  
Collection of William S. Wilson



E'wao Kagoshima  
*All Saint's Day, 2008*  
31.5 x 43 inches  
unique work



Alex Rose  
*Untitled, 2011*  
11.5 x 8 inches  
unique work

Dining Room:



Nancy Shaver  
*Daisy*, 2011  
found metal milk crate, metal scraps, found upholstery board,  
upholstery fabric, canvas, glue, paper, house paint, acrylic  
paint  
77 x 19.5 x 13.25 inches  
unique work



Ray Johnson  
*Untitled (Twin Hoops)*, 1963  
collage  
4 1/2 X 4 ; 10 x 11 1/2 inches  
unsigned  
Collection of William S. Wilson



Matthew Higgs  
*Handford Yang I*, 2008  
framed book cover  
16 1/2 x 24 1/8 inches  
unique work



Matthew Higgs  
*Nobody Lives Forever*, 2008  
framed book page  
14 1/8 x 11 inches  
unique work



Ray Johnson  
*Untitled (Marianne Moore's Hat)*, 1974  
collage  
13 1/2 X 11 1/4 ; 16 1/4 x 14 1/2 inches  
inscribed "For Bill. W", rubber-stamped "COLLAGE BY RAY  
JOHNSON", unsigned  
Collection of William S. Wilson



Ray Johnson  
*Walking Man*, 1958  
collage  
9 3/8 X 7 3/8; 15 x 13 1/4 inches  
unsigned  
Collection of William S. Wilson



Alex Rose  
*Untitled*, 2010  
collage, paper  
8 x 11.5 inches  
unique work



Ray Johnson  
*Untitled*, 1979  
collage on cardboard panel  
12.5 x 12.5 inches  
unique work



David Malek  
*Arzachael, Ptolemy and the Railway*, 2012  
enamel on canvas  
31.25 x 23 inches  
unique work  
MD\_11\_011

[hanging over table]



B. Wurtz  
*Collection #10*, 1999  
plastic, wood, 35 mm transparencies, thread  
27.5 high x 18.25 diameter inches  
unique work



Stephen Sprott  
*Lunch*, 2008  
collage  
4.5 x 5.25 inches  
unique work  
Collection of Javon Gunton



Lisa Beck  
*Dome*, 2011  
enamel paint on fabric-backed mylar over panel  
20 inch diameter  
unique work





Keith Sonnier  
*Monsieur Pierre (Flocked Relic Series)*, 2010  
African mask, flocking  
18 x 7 x 6 inches  
unique work



Chris Martin  
*Garden at 11 Munn St.*, 2008-2012  
oil and collage on canvas  
52 1/8 x 42 1/4 inches  
unique work



Jiyeon Park  
*Untitled*, 2010  
paper mache, gouache, acrylic paint, artificial hair  
6 x 12 x 13 inches  
unique work



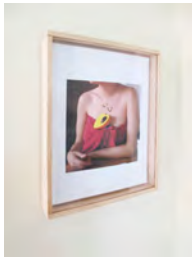
Jiyeon Park  
*Pants!*, 2011  
EPS, aquaresin, enamel paint, artificial hair  
14 x 9 x 11 inches  
unique work



Erik Lindman  
*European*, 2012  
found surface (paperboard) and emulsion on panel  
14x10 inches  
unique work

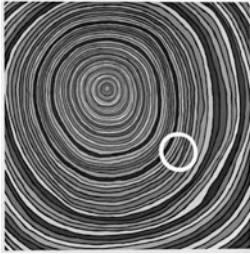


Erik Lindman  
*Shirt*, 2012  
found surface (paperboard, paint) and emulsion on panel  
14x10 inches  
unique work



Josh Tonsfeldt  
*Untitled*, 2012  
pigment inks on paper in artist's frame  
9.5 x 12 inches  
unique work

Blue Room:



Mamie Holst  
*Landscape Before Dying (Toward Exiting #8)*, 2008  
acrylic paint on canvas  
71 x 71 inches  
unique work



E'wao Kagoshima  
*Untitled*, 1970  
graphite on paper  
25 x 5 inches  
unique work



Bill Komoski  
*12/19/10*, 2010  
cardboard, acrylic paint on canvas  
24 x 19 inches  
unique work



Bill Komoski  
*1/7/2011*, 2011  
polyurethane foam, papier maché, acrylic paint on canvas  
27 x 23 inches  
unique work



Bill Komoski  
*7/5/2012*, 2012  
papier maché, acrylic paint on canvas  
28 x 24 inches  
unique work



Bill Komoski  
5/2/11, 2011  
papier maché, acrylic paint on canvas  
26 x 24 inches  
unique work



Bill Komoski  
3/1/12, 2012  
styrofoam, acrylic paint on canvas  
20 x 16 inches  
unique work

Television:

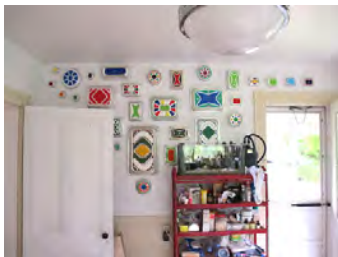


Motoko Fukuyama  
Screen 34-38 "*Killing of Pan*", 2012  
High Definition Video, 16:9  
TRT 4:25  
written by and in collaboration with Azumi Hasegawa



Stephen Sprott  
*Twilight of the Idols*, 2011  
digital video  
7 minutes

Kitchen:

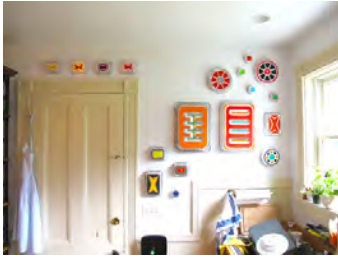


B. Wurtz  
*Group of Untitled (pan paintings)*, various dates  
acrylic paint on aluminum  
various dimensions  
Large: \$1,200.00; Medium: \$900.00; Small: \$600.00



Ryan Foerster  
*Compost - Fruit Bomb Glossy*, 2011  
c-print  
16.5 x 24 inches  
unique work





B. Wurtz  
*Group of Untitled (pan paintings)*, various dates  
acrylic paint on aluminum  
various dimensions  
Large: \$1,200.00; Medium: \$900.00; Small: \$600.00

Darren Bader  
*Intense Pear*, 2012

Stairwell:



Aura Rosenberg  
*The Golden Age, Untitled (Office Voyeur)*, 2012  
inkjet print, acrylic paint  
6 1/2 x 6 inches  
unique work



Matthew Higgs  
*Photograph of a book ('JOHN CURRIN')*, 1999  
c-print  
16 1/2 x 14 3/4 inches  
edition of 10

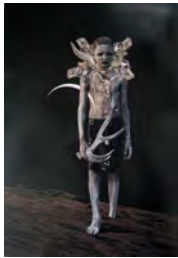


Matthew Higgs  
*Ultra Mundane*, 2008  
framed book cover  
20 x 16 3/4 inches  
unique work



Virginia Overton  
*Untitled (Captain America)*, 2012  
light fixture and fabric  
9 x 6 x 5 inches  
unique work

Upstairs Hallways:



Alex Rose  
*Untitled, 2010*  
collage, paper  
11.5 x 8 inches  
unique work



Davina Semo  
*AFTER EVERYONE LEFT, SHE FOUND HERSELF ALONE IN THE ROOM, 2012*  
stainless steel  
13 3/4 x 1 1/2 x 2 1/2 inches  
unique work



Mamie Holst  
*Landscape Before Dying (Kismet #4), 2011*  
acrylic paint on canvas  
26 x 26 inches  
unique work



David Malek  
*Orange Sponge, 2012*  
Day-Glo latex alkyd on sponge  
unique work  
MD\_11\_012

Upstairs Bedroom 1:



Alex Rose  
*Untitled, 2008*  
collage, ink on paper  
10.5 x 8 inches  
unique work



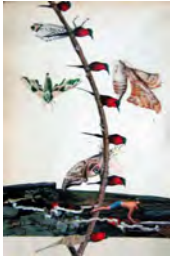
Agnes Lux  
*#35-1.25, 2012*  
graphite on postcards  
82.68 x 52.2 inches/210 x 133.5 cm  
unique work  
Creature From the Blue Lagoon



Justin Matherly  
*Discovering the Faculty of Enjoying throughout Eternity  
Continual Supreme Happiness, 2012*  
inkjet monoprint, spray paint  
37 x 35 3/4 inches  
unique work



Alex Rose  
*Untitled, 2008*  
collage on paper  
10 x 7 inches  
unique work



Alex Rose  
*Untitled, 2008*  
collage, watercolor, paper  
10 x 6.5 inches  
unique work



Alex Rose  
*Untitled, 2012*  
collage, paper  
11.5 x 8 inches  
unique work



David Malek  
*Theophilus, Cyrillus & Catharina, 2012*  
enamel on canvas  
30 x 23 inches  
unique work  
MD\_11\_010



Lisa Beck  
*Observer, 2012*  
chrome pedestal mirror, enamel paint  
13.5 x 9 x 4.5 inches  
unique work

Upstairs Bedroom 2:



Ray Johnson  
*Untitled (Andy Warhol Profile with Dancers behind Striped Screen)*, 1976/87/89  
collage on cardboard panel  
9 x 8.5 inches  
unique work



Tamara Gonzales  
*Benevolent Maelstrom*, 2010  
spray paint on canvas  
60 x 48 inches  
unique work



Josh Tonsfeldt  
*Untitled (Bird)*, 2011  
digital video  
TRT: 2:21  
edition 2 of 5 + 1 AP



Aura Rosenberg  
*The Golden Age (2 Women on Bed b/w)*, 2012  
acrylic paint  
8 x 11 inches  
unique work



Stephen Sprott  
*The Speculative Moment*, 2008  
collage  
10 x 10 inches  
unique work  
Collection of Javon Gunton



Anne Collier  
*This One's For You*, 2002  
c-print  
20.5 x 25.75 inches  
edition 2/5 + 2 APs



Jiyeon Park  
*Wink*, 2011  
paper mache, acrylic medium, artificial hair  
10 x 11 x 8 inches  
unique work



E'wao Kagoshima  
*Untitled*, 1976  
oil on paper  
9 x 9 inches  
unique work



Aura Rosenberg  
*Dialectical Porn Rock, Untitled, (Faces Circle #1)*, 1989/2012  
rocks, magazine clippings, resin  
dimensions variable  
unique work



E'wao Kagoshima  
*Untitled*, 1976  
oil on paper  
9 x 9 inches  
unique work

Upstairs Hallway:



G. William Webb  
*Tank*, 2012  
soap  
4.625 x 83.25 inches  
unique work

Attic:



Davina Semo, site specific installation comprising 16 elements  
L-R  
*FOR A WHILE I WAS TRYING TO SAY YES TO EVERYTHING; ONE OF THE PLACES PEOPLE HIDE IS DEPRESSION; I MUST SUGGEST YOU GO ELSEWHERE FOR HELP; I ACT WITHOUT PERMISSION; WITH A ROLLING MOTION OF HER HAND, SHE GESTURED TO HIM TO GET ON WITH IT*, 2012





*YOU COULD BE ATTRACTED TO BEAUTY, YOU COULD BE ATTRACTED TO BRAWN; ALL ALONG HE INSISTED AND ALL ALONG I KNEW HE WAS RIGHT; HER VOICE WAS LARGE AND THICK LIKE HER HANDS; THEY DON'T THROW PEOPLE AWAY, THEY OWN THEM; HE WAS A DELIGHT TO LOOK AT, AND TO WORK ON; RESTRAINT IS NOT SOMETHING SHE EXPECTS OF HERSELF, 2012*



*DIGGING HAD GIVEN HER STRONG MUSCLES; VERY WELL; THREATEN ME; MY DAD USED TO TELL ME NOT TO CHEW ON SOMETHING THAT WAS EATING YOU; HE WOULDN'T ARGUE WITH ME-- IT WAS ONE OF THE MOST MADDENING THINGS ABOUT HIM, 2012*



Davina Semo  
*FOR A WHILE I WAS TRYING TO SAY YES TO EVERYTHING, 2012*  
spray paint transfer on reinforced concrete, safety glass  
5 x 5 x 1 5/8 inches  
unique work



Davina Semo  
*ONE OF THE PLACES PEOPLE HIDE IS DEPRESSION, 2012*  
spray paint transfer on reinforced concrete, safety glass  
16 x 16 inches  
unique work



Davina Semo  
*I MUST SUGGEST YOU GO ELSEWHERE FOR HELP, 2012*  
etched one-way mirror, enamel paint  
18 x 18 inches  
unique work



Davina Semo  
*I ACT WITHOUT PERMISSION, 2012*  
spray paint transfer on reinforced concrete, safety glass  
7 x 7 x 1 1/2 inches  
unique work



Davina Semo  
*WITH A ROLLING MOTION OF HER HAND, SHE  
GESTURED TO HIM TO GET ON WITH IT*, 2012  
spray paint transfer on reinforced concrete, safety glass  
12 x 12 x 1 1/2 inches  
unique work



Davina Semo  
*YOU COULD BE ATTRACTED TO BEAUTY, YOU COULD BE  
ATTRACTED TO BRAWN*, 2012  
expanded steel, enamel paint  
2 panels, 60 x 12 inches and 12 x 48 inches  
unique work



Davina Semo  
*ALL ALONG HE INSISTED AND ALL ALONG I KNEW HE WAS  
RIGHT*, 2012  
etched one-way mirror, enamel paint  
18 x 18 inches  
unique work



Davina Semo  
*HER VOICE WAS LARGE AND THICK LIKE HER HANDS*, 2012  
spray paint transfer on reinforced concrete  
7 x 7 x 1 5/8 inches  
unique work



Davina Semo  
*THEY DON'T THROW PEOPLE AWAY, THEY OWN THEM*, 2012  
reinforced concrete, safety glass  
5 x 5 x 1 5/8 inches  
unique work



Davina Semo  
*HE WAS A DELIGHT TO LOOK AT, AND TO WORK ON*, 2012  
spray paint transfer on reinforced concrete, safety glass  
5 x 5 x 1 5/8 inches  
unique work



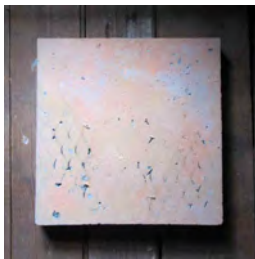
Davina Semo  
*RESTRAINT IS NOT SOMETHING SHE EXPECTS OF HERSELF*, 2012  
reinforced concrete  
12 x 12 x 1 1/2 inches  
unique work



Davina Semo  
*DIGGING HAD GIVEN HER STRONG MUSCLES*, 2012  
spray paint transfer on reinforced concrete  
16 x 16 x 1 1/2 inches  
unique work



Davina Semo  
*VERY WELL; THREATEN ME*, 2012  
expanded steel  
41 x 42 x 2 1/2 inches  
unique work



Davina Semo  
*MY DAD USED TO TELL ME NOT TO CHEW ON SOMETHING THAT WAS EATING YOU*, 2012  
spray paint transfer on reinforced concrete, expanded steel  
18 x 18 x 1 3/4 inches  
unique work



Davina Semo  
*HE WOULDN'T ARGUE WITH ME-- IT WAS ONE OF THE MOST MADDENING THINGS ABOUT HIM*, 2012  
reinforced concrete, safety glass  
9 x 9 x 1.5 inches  
unique work

Front Lawn:



Virginia Overton  
*Untitled (Tree with Log #1)*, 2012  
log, two ratchet straps  
dimensions variable  
unique work



Erik Lindman & Hunter Hunt-Hendrix  
*H/L 1 (Plexi stained glass)*, 2010/2012  
enamel and plexiglas  
96 x 48 inches  
unique work



Amy O'Neill  
*POTD*, 2012  
bronze  
24 x 24 x 32 inches  
unique work



B. Wurtz  
*Unkind Birdbath*, 2012  
stainless steel colanders, wire, tyvek, acrylic paint, string  
37 x 16.5 x 16.5 inches  
unique work



Erik Lindman & Hunter Hunt-Hendrix  
*H/L 2 (Purple metal)*, 2012  
found object (enamel, steel)  
9 feet high  
unique work



Servane Mary  
*Untitled (Tent)*, 2012  
silkscreen on slinky fabric, wood stick  
52 x 74 x 75 inches  
unique work



Chris Johanson  
*Found Wood Painted Blue Bird Sculpture #2*, 2012  
found wood and acrylic  
33 x 23 inches  
unique work





Chris Johanson  
*Found Wood Painted Blue Bird Sculpture #1*, 2012  
found wood and acrylic  
21 x 11 inches  
unique work

**Kitchen Porch:**



Ryan Foerster  
*Statement of Vindication - Mirror, Mlrror*, 2010-2012  
mirror  
16 x 12 inches



Tamara Gonzales  
*Dark Pond Andy*, 2010  
spray paint on canvas  
60 x 48 inches  
unique work

**Backyard:**



Virginia Overton  
*Untitled (Tree with Log #2)*, 2012  
log, two ratchet straps  
dimensions variable  
unique work



Andra Ursuta  
*A Worm's Dream Home*, 2012  
cast concrete  
20.5 x 15.5 x 14 inches  
unique work



Josh Tonsfeldt  
*Andrew (Safari Giraffe)*, 2012  
pigment inks on tyvek  
162 x 44 inches  
unique work





Donald Baechler  
*Tree #1*, 2003-2004  
cast bronze  
85 x 55 x 18 inches  
edition of 8 AP 2/2



Donald Baechler  
*Untitled*, 2004  
bronze  
84 inch tall  
edition 1/1

**Shed:**



Servane Mary  
*Untitled (Black Maria)*, 2012  
silkscreen on mirrored plexiglas  
site specific installation with 3 groups of panels: 79 x 192, 83 x 96, 78 x 75 1/2 inches  
unique work

**Driveway:**



G. William Webb  
*Dayvisible*, 2012  
aluminum  
108 x 46.5 x 3.5 inches  
unique work



Aura Rosenberg  
*Dialectical Porn Rock, Untitled, (Black/White Rock Circle #1)*, 1989/2012  
rocks, newspaper, xerox, resin  
dimensions variable  
unique work

**Pool:**



Joseph Montgomery  
*Image One Hundred Fifty Five*, 2012  
oil, wood, poly styrene foam, agua resin, plaster, bronze  
78 x 96 x 7 3/4 inches  
unique work



John Miller  
*Side Board*, 2012  
mannequin, synthetic wig, boogie board, swimsuit, puka beads,  
wooden dowel  
88 x 20 x 36 inches  
unique work



Johanna Jackson  
*Fruit Bowl*, 2012  
wool  
unique work



Aaron Suggs  
*Untitled (Camouflage Dinghy)*, 2011-2012  
plywood, fibergalss, epoxy resin, paint, vehicle wrap vinyl,  
inkjet on polyester, rope, stainless steel boat hardware  
120 x 54 x 120 inches  
unique work



Ryan Foerster  
*instead of just shouting about it, isn't it time we created an  
alternative*, 2012  
c-print with slag and rocks  
11 x 14 inches  
unique work  
FR\_12\_041