

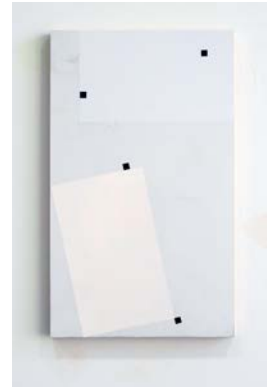
# MARLBOROUGH CHELSEA

**Marlborough Chelsea**  
*The Wall*  
April 4-May 4, 2013

**\*\*\* Please Return to Front Desk**

**BLACK, Sebastian**

*Period Piece (...)*, 2013  
enamel on engraved dibond  
20 x 12 in.  
50.8 x 30.48 cm



*Period Piece (\*\*\*)*, 2013  
enamel on engraved dibond  
20 x 12 in.  
50.8 x 30.48 cm



*Toroni Fresco al dente*, 2013  
joint compound and pigment  
Dimensions variable



**BROOKS, David**

*Myopic Wall Composition*  
(with one branch Broken into 12 pieces),  
2013  
MDF, metal structure, paint, hardware,  
one branch broken into 12 pieces  
82 x 98 x 72 in.  
208.28 x 248.92 x 182.88 cm



**DYMOND, Ara**

*Glypo, A Wall Sconce*, 2013  
MDF, electrical components, LED lighting, lacquer and  
wall-mounted plexiglass base, ed. 1/3  
83 x 31 x 12 in.  
210.82 x 78.74 x 30.48 cm



*The Dark Knight*, 2009  
graphite on paper with MDF stained oak base  
37 ½ x 9 ¼ x 12 ½ in.  
95.25 x 23.5 x 31.75 cm

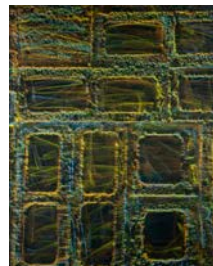


**FALLS, Sam**

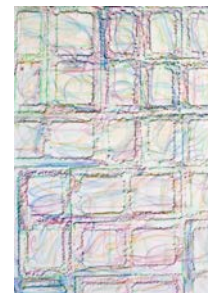
*Untitled (Block Rubbing 9)*, 2012  
colored pencil on paper  
41 x 29 in.  
104.14 x 73.66 cm  
\*not exhibited



*Untitled (Block Rubbing 25)*, 2012  
colored pencil on paper  
41 x 29 in.  
104.14 x 73.66 cm  
\*not exhibited



*Untitled (Block Rubbing 28)*, 2012  
colored pencil on paper  
41 x 29 in.  
104.14 x 73.66 cm



*Untitled (Wall Rubbing 1)*, 2012  
colored pencil on paper  
24 x 20 in.  
60.96 x 50.80 cm



## **LYNCH, Brendan**

*Untitled (circle)*, 2013  
sanded paint  
dimensions variable

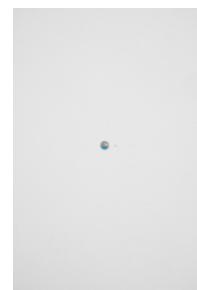


*Untitled (corner)*, 2013  
sanded paint  
dimensions variable



## **PLESSET, Anna**

*North Wall Fragment*, 2013  
oil on drywall from UNTITLED  
3 x 3.25 in.  
7.6 x 8.3 cm



*South Wall Fragment*, 2013  
oil on drywall from UNTITLED  
12.75 x 11.375 in.  
32.4 x 28.9 cm



**SEMO, Davina**

*IN THIS ONE SECOND OF SILENCE WE WERE  
SPEAKING TO EACH OTHER OPENLY  
FOR THE FIRST TIME*, 2013

spray paint transfer on reinforced concrete  
16 x 16 x 1 ½ in.  
40.64 x 40.64 x 3.81 cm



*SHE HAD A BEAUTIFUL FACE, A BEAUTIFUL  
BODY, BUT ALSO A DISTANCE IN HER SUCH AS  
HE HAD NEVER MET*, 2013

stainless steel  
11 x 1 1/8 x 2 in.  
27.94 x 2.85 x 5.08 cm



*SHE LOOKED AT HIM FINALLY, A SADNESS IN  
HER EYES, AS IF SHE WAS ASKING HIM TO  
THINK OF A WAY TO HELP HER*, 2013

painted steel chain  
117 x 76 in.  
297.18 x 193.04 cm



**SMITH, Clive**

*Wall K*, 2013  
oil on canvas  
65 x 54 in.  
165.10 x 137.16 cm

